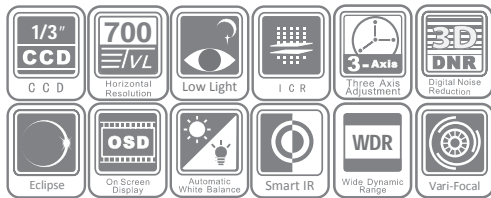


# Mini dôme analogique intérieur 1/3» SONY CCD 700TVL (976x582)

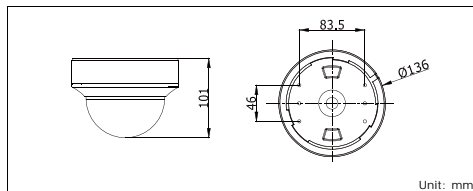
Réf. : VZ-2CC51A7P-VF



## Key features

- 1/3" SONY CCD
- 700 TVL Horizontal Resolution
- Super Low Illumination
- 2.8–12mm Vari-focal Lens
- True Day/Night
- 75 dB Wide Dynamic Range (DS-2CC51A7P(N)-VF)
- OSD Menu, DNR, Smart IR, Eclipse

## Dimensions



Réf. : VZ-1249ZJ

| Camera                       |  |  |  |
|------------------------------|--|--|--|
| Image Sensor                 | 1/3" SONY CCD  |  |  |
| Signal System                | PAL/NTSC   |  |  |
| Effective Pixels             | PAL: 976 (H) × 582 (V), NTSC: 976 (H) × 494 (V)  |  |  |
| Min. Illumination            |  |  | Color: 0.001 Lux @ (F1.2, AGC ON),<br>0.0001 Lux @ (F1.2, AGC ON, sensitivity × 512)<br>B/W: 0.0001 Lux @ (F1.2, AGC ON),<br>0.00001 Lux @ (F1.2, AGC ON, sensitivity × 512)<br>Color: 0.0014 Lux @ (F1.4, AGC ON),<br>0.00014 Lux @ (F1.4, AGC ON, sensitivity × 512)<br>B/W: 0.00014 Lux @ (F1.4, AGC ON),<br>0.000014 Lux @ (F1.4, AGC ON, sensitivity × 512) |
| Shutter speed                | PAL: 1/50 s to 1/100,000 s, NTSC: 1/60 s to 1/100,000 s  |  |  |
| Lens                         | 2.8 - 12 mm @ F1.4<br>Angle of view: 80° - 27.2°   |  |  |
| Lens Mount                   | φ14  |  |  |
| Auto Iris                    | DC drive   |  |  |
| Angle Adjustment             | Pan: 0 - 355°, Tilt: 0 - 180°, Rotation: 0 - 355°  |  |  |
| Day & Night                  | IR cut filter with auto switch   |  |  |
| Horizontal Resolution        | 700 TVL  |  |  |
| Synchronization              | Internal/Power synchronization   |  |  |
| Video Output                 | 1Vp-p composite output (75 Ω/BNC)<br>Test monitor out [1Vp-p composite output (75 Ω/BNC), device line] |  |  |
| S/N Ratio                    | More than 62 dB  |  |  |
| Menu                         |  |  |  |
| Camera ID                    |  |  | On/Off (16 letters, position adjustable)   |
| Auto Gain                    |  |  | Low/Middle/High/Off  |
| D/N Mode                     | Auto /Day/Night  |  |  |
| White Balance                |  |  | Auto trace WB1/Auto trace WB2/Manual/Auto Control  |
| Privacy Masking              |  |  | On/Off, maximum 12 zones   |
| Motion Detection             | On/Off   |  |  |
| Back Light                   |  |  | Area/Value/Off   |
| WDR                          |  |  | Value/ Contrast / WD exposure compensation/ Return   |
| Anti-Flicker                 |  |  | On/Off   |
| Language                     |  |  | English/Chinese  |
| Function                     |  |  | SMART IR, Eclipse, Digital Noise Reduction, Sharpness, Brightness, Saturation, Resolution, Electronic image stabilization, Digital Zoom, Mirror, Defect Pixel Correction, auto-iris correction   |
| Scene                        |  |  | Indoor Standard , Indoor Backlight , Outdoor, Low illumination , Customize, IR Standard  |
| General                      |  |  |  |
| Working Temperature/Humidity | -10 °C - 60 °C (14 °F - 140 °F)<br>Humidity 90% or less (non-condensing)                               |  |  |
| Power Supply                 | 24 V AC ± 10%, 12 V DC ± 10%   |  |  |
| Power Consumption            | Max. 4 W<br>(Max. 4.5 W with IR cut filter on)   |  |  |
| Dimensions                   | Φ 136 × 101 mm (Φ 5.35" × 3.98")   |  |  |
| Weight                       | 800 g (1.76 lbs)   |  |  |